

Customer: **Safer Products**

Address: **4900 E Pacific Place  
Denver, CO 80222**

Sample ID: **THCa Flower - Gary Payton**

Matrix: **Biomass**

Labnumber: **23A0005-04**



THCa Flower  
Gary Payton  
23A0005-04



## Cannabinoid Profile

Test Conditions: 17°C

Extraction Technician: SH

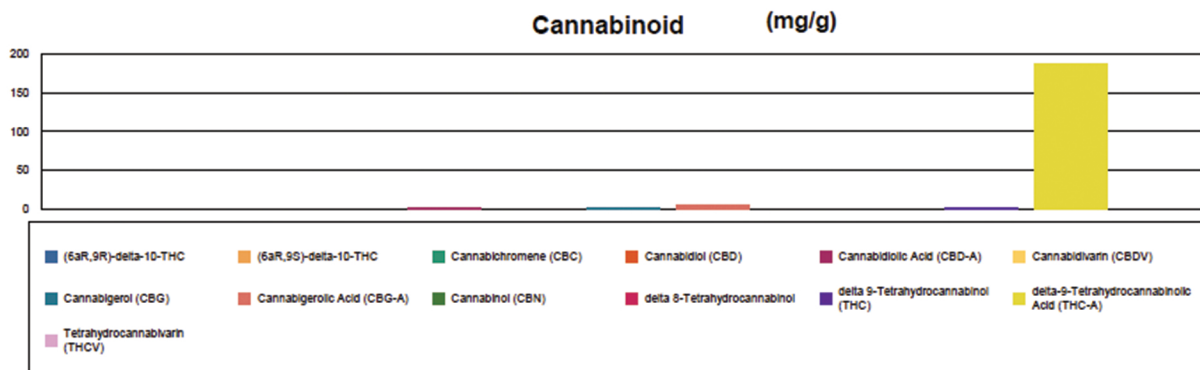
Analytical Chemist: SH

Extraction Date(s)	Analysis Date(s)
1/3/2023	1/3/2023

Cannabinoids (HPLC)		Results	
	LOD (mg/g)	%	mg/g
Cannabidiol (CBD)	<0.20		
Cannabidiol Acid (CBD-A)		0.05	0.5
Cannabigerol (CBG)		0.46	4.6
Cannabigerol Acid (CBG-A)		0.13	1.3
Cannabidiol (CBD)	<0.20		
Tetrahydrocannabinol (THC)	<0.20		
Cannabinol (CBN)	<0.20		
Cannabichromene (CBC)	<0.20		
delta 9-Tetrahydrocannabinol (THC)		0.14	1.4
delta-9-Tetrahydrocannabinol Acid (THC-A)		18.65	186.5
delta 8-Tetrahydrocannabinol	<0.40		
(6aR,9S)-delta-10-THC	<0.40		
(6aR,9R)-delta-10-THC	<0.40		
<b>Cannabinoids Total</b>		<b>%</b>	<b>mg/g</b>
Max Active THC (delta-9-tetrahydrocannabinol)		16.54	165.37
Max Active CBD		0.05	0.46
Total Cannabinoids		19.40	194.00

Following USDA guidelines on uncertainty, Altitude Consulting's uncertainty is calculated to be +/- 3% for all cannabinoids using a coverage factor of 2 (95% confidence interval). Measurement uncertainty has not been factored into reported values.

Blank results indicate the compound was below the limit of detection.



**Gary Brook - Laboratory Director - 1/4/2023**

Reporting Limits will vary based on sample extraction weight used for the analysis.

The results of this report are based solely on the sample submitted and cannot be reproduced. Decision Rule: Measurement uncertainty is not accounted for in the reported values. Results are based solely on calculated numbers. Altitude Consulting makes no Statements of conformity. Pesticide, metal, and microbial analyses are subcontracted to ISO 17025 laboratories.