

DEA No. RA0571996
 FL License # CMTL-0003
 CLIA No. 10D1094068

Certificate of Analysis

Compliance Test

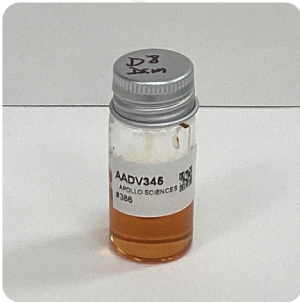
Batch # #386
 Batch Date: 2022-12-07
 Extracted From: HEMP

Test Reg State: Oregon

Order # APO221207-010001
 Order Date: 2022-12-07
 Sample # AADV345

Sampling Date: 2022-12-09
 Lab Batch Date: 2022-12-09
 Completion Date: 2022-12-12

Initial Gross Weight: 15.505 g



Product Image

Potency
 Tested

**Delta 8/Delta 10
 Potency 13 - (LCUV)**

Tested
 SOP13.052 (LCUV)

Potency Summary

Specimen Weight: 54.560 mg

Analyte	LOD (%)	LOQ (%)	Result (mg/g)	(%)
Delta-8 THC	2.60E-5	0.0015	867.490	86.749
CBC	1.80E-5	0.0015	<LOQ	<LOQ
CBD	5.40E-5	0.0015	<LOQ	<LOQ
CBDA	1.00E-5	0.0015	<LOQ	<LOQ
CBDV	6.50E-5	0.0015	<LOQ	<LOQ
CBG	2.48E-4	0.0015	<LOQ	<LOQ
CBGA	8.00E-5	0.0015	<LOQ	<LOQ
CBN	1.40E-5	0.0015	<LOQ	<LOQ
Delta-10 THC	3.00E-6	0.0015	<LOQ	<LOQ
Delta-9 THC	1.30E-5	0.1	<LOQ	<LOQ
Delta6a10a-THC	8.47E-5	0.0015	<LOQ	<LOQ
THCA-A	3.20E-5	0.0015	<LOQ	<LOQ
THCV	7.00E-6	0.0015	<LOQ	<LOQ

Total Delta 8 86.749%	<LOQ	Total Delta 10 None Detected
Total Active THC None Detected	-	Total Active CBD None Detected
Total CBG None Detected	-	Total CBN None Detected
Other Cannabinoids None Detected	-	Total Cannabinoids 86.749%

Xueli Gao Lab Toxicologist
 Ph.D., DABT

Aixia Sun Lab Director/Principal Scientist
 D.H.Sc., M.Sc., B.Sc., MT (AAB)



Definitions and Abbreviations used in this report: Total Active CBD = CBD + (CBD-A * 0.877), *Total CBDV = CBDV + (CBDVA * 0.87), Total Active THC = THCA-A * 0.877 + Delta 9 THC, Total THCV = THCV + (THCVA * 0.87), CBG Total = (CBGA * 0.877) + CBG, CBN Total = (CBNA * 0.877) + CBN, Total CBC = CBC + (CBCA * 0.877), Total THC-O-Acetate = Delta 8 THC-O-Acetate + Delta 9 THC-O-Acetate, Other Cannabinoids Total = Total Cannabinoids - All the listed cannabinoids on the summary section, Total Detected Cannabinoids = Delta6a10a-THC + Delta8-THC + Total CBN + CBT + Delta8-THCV + Total CBG + Total CBD + Total THCV + CBL + Total THC + Total CBC + Total CBDV + Delta10-THC + Total THC-O-Acetate, Analyte Details above show the Dry Weight Concentrations unless specified as 12% moisture concentration. (mg/ml) = Milligrams per Milliliter, LOQ = Limit of Quantitation, LOD = Limit of Detection, Dilution = Dilution Factor (ppb) = Parts per Billion, (%) = Percent, (cfu/g) = Colony Forming Unit per Gram (cfu/g) = Colony Forming Unit per Gram, , LOD = Limit of Detection, (µg/g) = Microgram per Gram (ppm) = Parts per Million, (ppm) = (µg/g), (aw) = aw (area ratio) = Area Ratio, (mg/Kg) = Milligram per Kilogram, *Measurement of Uncertainty = +/- 10%

This report shall not be reproduced, without written approval, from ACS Laboratory. The results of this report relate only to the material or product analyzed. Test results are confidential unless explicitly waived otherwise. ACS Laboratory is accredited to the ISO/IEC 17025:2017 Standard.